



Holmesglen Centre for Applied Research and Innovation

Holmesglen Research 2018-2019

Contents

4	From the Director
5 - 8	Holmesglen Research Initiatives: selected highlights
9 - 10	Applied Research at Holmesglen: externally funded research
10 - 11	Holmesglen applied Research and Innovation funded projects
11	Staff Research
11	Student Research
11	Developing an Applied Research culture
12 - 13	Establishing a Research Profile: participation in conferences
14	Publications



From the Director

Dr Henry Pook
Director, Centre for Applied Research and Innovation

Welcome to Holmesglen Research 2018-2019, a report compiled by the Centre for Applied Research and Innovation (the Centre) to recognise the individual and combined achievements of Holmesglen research.

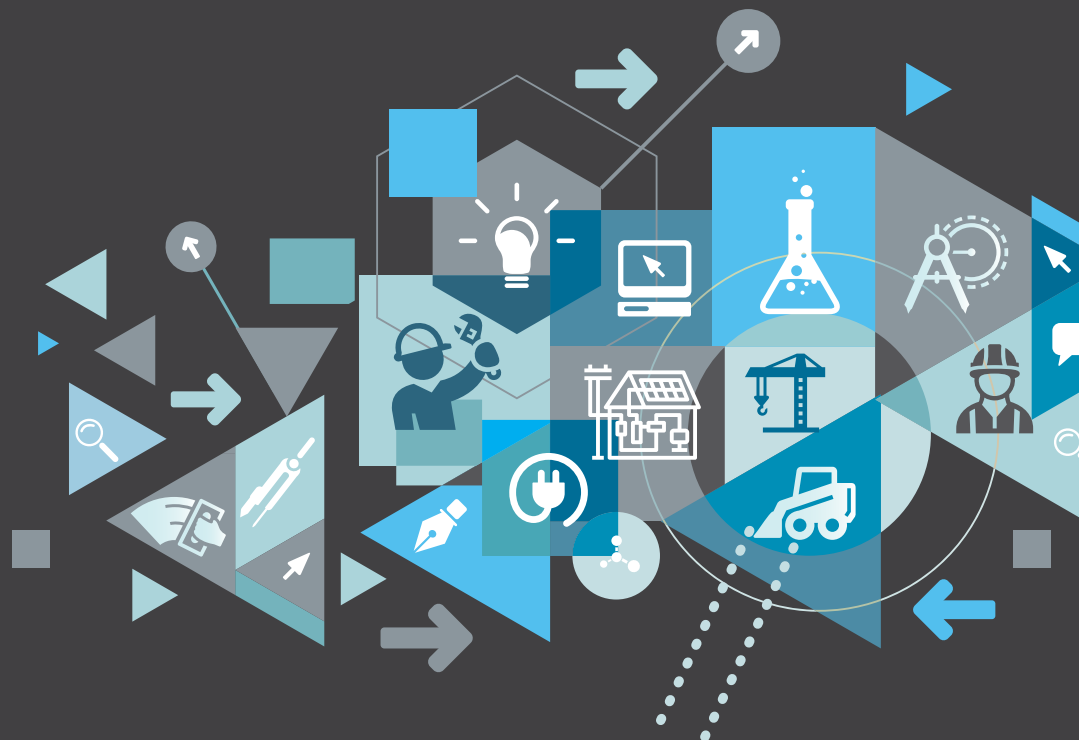
At a time when there is growing interest in applied research and much comment about the need to meet the challenge posed by new and emerging technologies, Holmesglen Institute has demonstrated a commitment to the development of an applied research programme that focuses upon support for an innovation economy and industry linked research into the skills demanded by the digital age. Such a commitment is reflected in Holmesglen's impressive record of applied research and innovation projects that cover applied research across a range of industry sectors and in education and training.

This report covers a period of new achievement where faculties, entrepreneurial business units, and the Centre have worked closely together in establishing exciting new research initiatives and a resilient research culture at the Institute. This has resulted in a range of innovative research projects in co-operation with industry and community, the engagement of Holmesglen researchers through a sustained programme of

professional development in the field of applied research, and the showcasing of our research across the vocational and professional education and training sector through a number of diverse events.

During 2018-2019 the Centre provided critical support for projects in an enabling capacity. This support ranged from strategy development, partnerships and stakeholder relationships, to research ethics and integrity, and the sourcing of funding for current and proposed projects.

This digital report provides you with an overview of Holmesglen's research performance over 2018-2019. You will find information about our research projects, our research engagement with community and industry, and the development of our research capability.



Holmesglen Research Initiatives

Selected highlights

LEADING THE WAY

Holmesglen Institute is increasingly viewed as a leader in applied research and innovation across the TAFE sector. This growing profile has been enhanced through the Institute's active involvement in sector wide activities designed to support the consolidation of applied research in vocational institutions. This has included membership of the Victorian TAFE Association's 'Research and Advocacy Committee', participation in a Victorian TAFE Association (VTA) sponsored project on the importance of TAFE to Victoria's economy conducted by KPMG, sponsorship of visiting researchers from the world of applied research, appearance of the Director, Centre for Applied Research and Innovation at recent hearings of the House of Representatives Standing Committee on Employment, Education and Training, 'Funding Research', an Australian Research Council Discovery Project: Vocational Institutions and Undergraduate Degrees and in October 2019, the Centre developed and hosted a TAFE-wide conference, OctoberVET at Holmesglen: Showcasing Applied Research in TAFE.

Holmesglen has also led the way in developing research opportunities through partnerships with industry, in particular health industries related research, proposed research opportunities with the building construction industry and VR (virtual reality) related research and innovation.

Selected highlights from our range of initiatives demonstrate the strength and diversity of applied research at Holmesglen.



Health Industries: Applied Research Partnerships

Holmesglen's partnership with Healthscope has broken new ground with the development of a private hospital at its Moorabbin campus which delivers clinical training for health science students and health care for the local community. It has also provided Holmesglen with the opportunity to enhance its programme of applied research across the faculty leading to the continuing improvement of its teaching programmes and to patient outcomes in the health sciences.

Research projects included: the prevention of falls in Australian hospitals, a virtual reality simulation programme for nurse education, an integrated practical placement programme for young people with a disability in conjunction with the Royal Children's Hospital, and the trialling of an online specialist training programme for radiographers.

A Public-Private Partnership to Prevent Falls in Australian Hospitals

This public-private partnership brings together an outstanding multi-disciplinary team of eminent falls researchers, policy makers, consumers, hospital executives, managers and clinicians to reduce falls and serious injuries in Australian Hospitals.

JasperVR: A Virtual Reality Simulation Programme for Vocational & Higher Education in TAFE

JasperVR will make use of Virtual Reality to expose students to the different and complex situations they are likely to face in their future professional work. It will use 360 degree-video technology to capture the variations and potential outcomes resulting from a typical scenario. The videos will then be transformed into a VR Simulation Training Program. By using the VR headset and by means of gaze feedback, students will be able to make decisions that in turn will determine the future trajectory of the patient. JasperVR will enable 100% of students to actively participate in an immersive simulated learning experience at their own pace, time and venue.

An Integrated Practical Placement Program: Evaluation of a pilot program of social inclusion in the workplace for young people with disability

This project will investigate the experiences of students, supervisors, course developers and hospital leaders of the project's implementation and outcomes. A comparison of the experiences of these students with other students enrolled in the Certificate I of Work Education will also take place

An Evaluation of MammographyOnline

An evaluative research project conducted on Mammography Online. Mammography Online, a specialist training programme for Radiographers developed as part of a Holmesglen-BreastScreen collaboration, is a new online learning environment that replaced the academic training module for breast screening radiographers. The aim of this project is to assess the adequacy of the processes surrounding course development, implementation and establishment; and to identify the impact of the course on participants and work-based practices.

Building Industry Research: new partnerships and technologies

Building 4.0 Co-operative Research Centre (CRC)

Holmesglen has become a research partner in a university-industry based consortium headed by Monash University, the University of Melbourne, Lend Lease, the Donovan Group and Coresteel buildings in a large Cooperative Research Centre funding bid (Building 4.0 CRC) that aims to create, through research, an innovation 'ecosystem' in building construction. If the bid is successful, research areas will focus on the development of training programs in the use of new technologies (including digital technologies and robotics); innovations to work processes; and policy and regulations improvement. The CRC will utilise Holmesglen's extensive workshop facilities and trained technical staff to support trials of improvements to the key building phases.

Holmesglen Research Initiatives

Selected highlights

Learning analytics and building construction education

Research in this area investigates how learning analytics data can be used to support student learning and teaching practice. Data is used to provide individualised feedback to students and to inform teaching practice, in particular in analysing student interactions with online learning systems. Two of our research projects have broken new ground in this field.

Video feedback: Start of a dialogue

This research is in 'learning analytics', a field of growing importance in vocational and higher education. Areas of application in this field include use of system log data to identify and trigger support for students at risk of failure, and as evidence to inform learning design.

'Video Exemplar: From Meaningless to Meaningful'

The purpose of this research was to create a video annotated exemplar for students to help them identify what quality work looks like within their field of expertise.

Fashion Studies-working in partnership with industry.

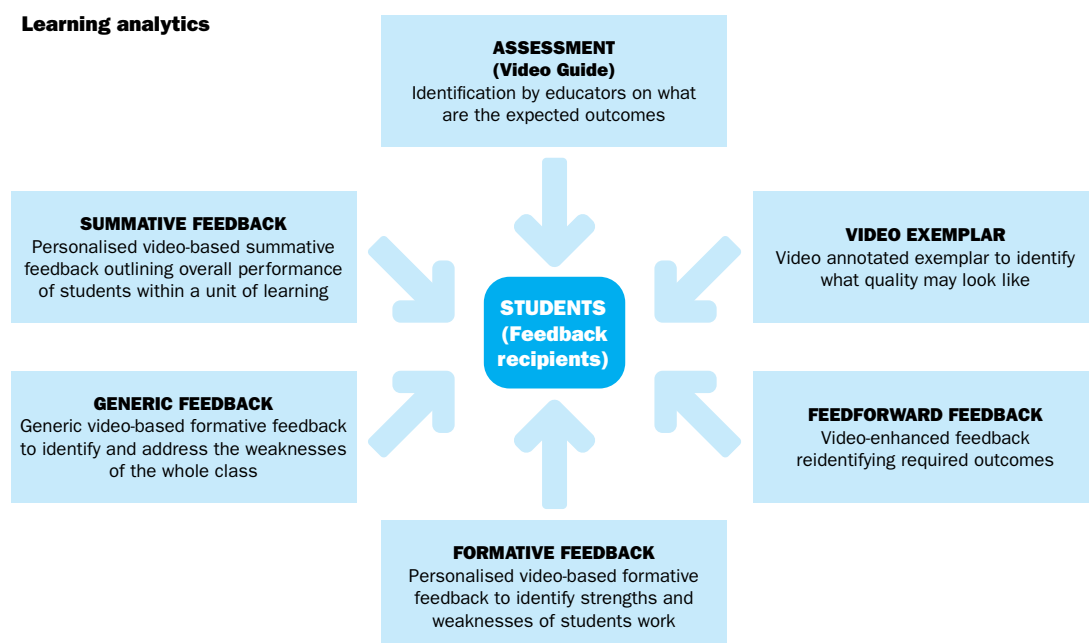
An applied research project undertaken by the lecturing staff in fashion programmes involved working in co-operation with industry and other education providers to research and re-create British army red coats that were worn by the army garrison in the Colony of Victoria during the gold rush period.

Research planning has taken place involving Museums Victoria, Sovereign Hill open-air museum, Holmesglen, and RMIT on how best to authentically re-create

these coats for Sovereign Hill staff. This resulted in an applied research project that involved Holmesglen staff working in consultation with industry partners to undertake historical research into the appearance of the uniforms, the materials used by manufacturers at the time, the creation of patterns for the coats and then the manufacture of new coats in accordance with historical principles. Students then participated in the development and trial of learning materials designed to capture the basics of this once lost method of design and production: an essential stage in the cycle of applied research and development in a TAFE environment. The final stage of the project involved the digitising of these practical skills developed from applied research in fashion studies for use in education and training programmes.

Research into student placement programmes-business studies working in co-operation with industry partners

- A research project has been developed that examines the attitudes and perceptions of short-term Student Placement Programs (SPP) by members of the Institute of Public Accountants (IPA). It studies their expectations about students, perceived benefits and motivation when participating in such a program.
- A further applied research project is being undertaken into Holmesglen's student placement programmes in business studies. Outcomes of the research will be applied to the improvement of current processes in sourcing new host businesses and in the placement of students.
- A longitudinal research study of Holmesglen's 'Start-up Hub'. The research will inform decision making about improvements needed in the operation of the programme.



Holmesglen Research Initiatives

Selected highlights

Hospitality management

Research into the Effectiveness of Graduate Communication Skills

How effective are the Graduate Communication Skills self-assessments in mapping student capability throughout the Bachelor of Hospitality Management programme? This project researches how prepared for tertiary studies are students transitioning into the Bachelor of Hospitality Management; it evaluates whether the use of the Graduate Communication Skills self-assessments contributes to students' self-awareness and efficacy.

Hospitality Management degree studies in co-operation with Murrindindi Shire and Goulburn River Valley Tourism

Students in the third year of Bachelor of Hospitality Management undertake applied research projects in collaboration with hospitality industry operators in the Murrindindi shire and work in partnership with the Goulburn River Valley Tourism (GRVT) Association into the regional hospitality industry. Industry partners have included Mitchelton and Tahbilk wineries.

Students work in small groups, with an existing business and evaluate its current position, consider what opportunities exist to advance the business within its own capabilities and in line with the broader regional perspective. Findings are shared at a panel review and discussion with the business owner/operators and GRVT representatives.

Sports Marketing

Holmesglen sports media in co-operation with Victorian Amateur Football Association (VAFA)

Student teams work alongside VAFA clubs developing marketing strategies for the clubs to consider. To achieve this, students submit a market research proposal which is followed by data collection (e.g. extended interview, survey, focus group, observation etc.) with club stakeholders.

OctoberVET at Holmesglen: Showcasing Applied Research in TAFE.

The Centre for Applied Research and Innovation, in conjunction with AVETRA, presented an OctoberVET at Holmesglen: Showcasing Applied Research in TAFE at Holmesglen on October 30, 2019.

The conference offered participants an opportunity to witness the applied research being created by researchers in TAFE and featured speakers, sessions showcasing a range of research projects taking place across the sector, research snapshots from leading applied researchers, and demonstrations of new technologies and their application to education and training. and an opportunity to network with other attendees

Research projects that were showcased ranged from 'redcoats reconstructed' (an applied research project conducted in co-operation with industry), to research into the applications of Virtual Reality in nursing and building construction, occupational stress amongst

chefs, falls screening for health professionals, and partnerships with industry and community in such areas as environmental management, developing a safety training programme for first responders to incidents on high speed roads, and improving employment outcomes for students with a disability. Issues surrounding the problem of apprenticeship retention were addressed by several researchers, while other sessions provided glimpses into the possibilities for applied research to develop the twenty-first century skills needed in workplace training.

The conference also included keynote addresses from prominent figures in the TAFE landscape, Bruce Mackenzie, former Chief Executive of Holmesglen and now leading the Mackenzie Research Institute, and Andrew Williamson, CEO of the Victorian TAFE Association. The conference featured the release of the VTA's '*Doing Applied Research in Victorian TAFE Institutes.*'

This very successful conference not only provided recognition for researchers in TAFE, it also set the parameters for further research and demonstrated how TAFE contributes to the development of industry and to a more vibrant community.

Visiting Researchers

Holmesglen Institute's profile and guiding philosophy has continued to benefit from visits by internationally recognised leaders in the field of applied research.

In co-operation with the VTA, the Centre hosted a visit in May 2018 from ISS (International Specialised Skills Institute) Fellow, Jose Luis Fernandez Maure. José Luis, Head of the International Department at TKNIKA (an Institute of innovation specialising in the development of innovation in technology and education; an important part of its activities is to make research and applied innovation fundamental elements of Vocational Education and Training in the Basque country), and leader of the Applied Research and Innovation Affinity Group of the World Federation of Colleges and Polytechnics.

During his visit Holmesglen hosted a Research Roundtable with staff researchers on the initiatives deployed in Europe to encourage and support the VET sector to work with industry on applied research.



Applied Research at Holmesglen 2018-2019

OctoberVET at Holmesglen: Showcasing Applied Research in TAFE.



Mary Faraone, Chief Executive, Holmesglen Institute, delivering the 'Welcome' address



Andrew Williamson, Chief Executive, Victorian TAFE Association, delivering a Keynote Address on the development of applied research in TAFE



Bruce Mackenzie, Mackenzie Research Institute, delivering a Keynote Address on the opportunities for research in TAFE



Dr Henry Pook, Director, Centre for Applied Research and Innovation, Holmesglen Institute, introducing Keynote Address speaker



(l to r) Andrew Williamson, Warren Guest, Dr Melinda Waters, Bruce Mackenzie, Dr Henry Pook, Dr Joe Pagnoccolo, Mary Faraone

Applied Research at Holmesglen 2018-2019

EXTERNALLY FUNDED RESEARCH PROJECTS

Health Science, Youth and Community Studies (HSYCS)

An Evaluation of MammographyOnline

- Holmesglen Grant Allocation: \$50,000
- Researchers: Prof Debra Kiegaldie and Fran Stewart (HSYCS) with BreastScreen Victoria

MammographyOnline is a new online learning environment that replaced the academic training module for breast screening radiographers. The aim of this project is to assess the adequacy of the processes surrounding course development, implementation and establishment; and to identify the impact of the course on participants and work-based practices.

An Integrated Practical Placement Program: Evaluation of a pilot program of social inclusion in the workplace for young people with disability

- Jobs Victoria Innovation Fund, Department of Economic Development, Jobs, Transport and Resources
- Holmesglen Grant Allocation: \$50,000
- Researchers: Professor Debra Kiegaldie, Stuart Hunter, Jan Davis, Gabby Koutoukidis (HSYCS) with Royal Children's Hospital

This project investigates the experiences of students, supervisors, course developers and hospital leaders of the project's implementation and outcomes. A comparison of the experiences of these students with other students enrolled in the Certificate I of Work Education will also take place

Expansion of the Integrated Practical Placement Program (HSYCS)

- Information, Linkages and Capacity Building (ILC) Grant
- Total Grant Amount: \$115,000
- Stuart Hunter and Professor Debra Kiegaldie

The ILC funding will support the expansion of the original program by employing a Project Manager to coordinate the project and oversee its expansion into other departments at RCH and other businesses. It will also test the validity and reliability of two assessment tools that were created in the pilot program in 2018.

JasperVR: A Virtual Reality Simulation Program for Vocational & Higher Education in TAFE

JasperVR will make use of Virtual Reality to expose nursing students to the different and complex situations they are likely to face in their future professional work. JasperVR will enable 100% of students to actively participate in an immersive simulated learning experience at their own pace, time and venue. The scenarios will be developed and the program trialed in 2019/20.

- Workforce, Innovation and Training Fund, Department of Education and Training, Victoria
- Total Grant Amount: \$1,590,176, Holmesglen Grant Allocation: \$374, 518
- Researchers: Professor Debra Kiegaldie Ruth Callander (Nursing Ronen Vansover (Nursing), Fran Stewart, Alana Wilson, Michelle Hall and Ellie White
- Research partners: Swinburne University and Curve Tomorrow
- Software Product completed July 2019
- Research trial commenced August 2019

A Public-Private Partnership to Prevent Falls in Australian Hospitals

- Commonwealth Government National Health & Medical Research Council
- Total Grant Amount: \$556,085, Holmesglen Grant Allocation: \$211, 770
- Professor Debra Kiegaldie (HSYCS) and Dr Louise Shaw (HSYCS) with:
 - La Trobe University
 - Healthscope Australia
 - Curtin University,
 - Monash University
 - University of Sydney
 - QUT

This public-private partnership brings together an outstanding multi-disciplinary team of researchers to investigate falls reduction in Australian Hospitals. The project will be framed around several important aspects of healthcare: improved patient outcomes, evidence-based clinical practice, optimal patient experience and the containment of healthcare costs.

Renewable Energy Programme Workforce Innovation Training Fund (WTIF)

Partners: Future Energy Skills Council, The Gordon Research into the development of a course to design, install, maintain, renewable energy systems. new energy technology systems (NETS).

Applied Research at Holmesglen 2018-2019

Establishing an Interprofessional Ward Round Protocol and education program for the diagnosis, risk factor assessment and collaborative management of delirium in post cardiac surgery patients.

- Healthscope Australia
- Total Grant Amount: \$25,000
- Professor Debra Kiegaldie and Fran Stewart

Patients who undergo cardiac surgery have an increased risk of developing delirium that is associated with many negative consequences such as increased morbidity and mortality, increased length of stay and poor cognitive and functional decline. The costs associated with delirium are substantial.

The aims of this research are to decrease the incidence and adverse outcomes of post cardiac surgery delirium. The researchers plan to investigate and implement the use of an evidence based Inter professional Ward Round Protocol for early detection and management of delirium post cardiac surgery and its associated risk factors.

Building Construction and Engineering (BCE)

'Every house has a floor'

- Workforce Innovation Training Fund (WTIF)
- Grant \$645,500
- Australian Flooring Industry

A research project in collaboration with Carpet Institute of Australia to develop resources for the Cert. II in Flooring that will provide a pathway that brings together all flooring types under one pre-apprenticeship program. Holmesglen will be funded to provide subject matter, expertise, develop learning and assessment resources for the program, development of marketing resources, and subsidising tuition fees for the delivery of the pilot program.

Heating Ventilation and Air Conditioning Centre of Excellence

- Workforce Innovation Training Fund (WTIF)
- Holmesglen/ Air Conditioning and Mechanical Contractors Association
- Grant: \$150,000

Collaboration and development of best practice HVAC mechanical plumbing training facility. Aim of further research is to develop training programmes and learning resources for mechanical services.

Augmented reality and virtual reality resources for the building construction industry (BCE)

- Workforce Innovation Training Fund (WTIF)
- With Exner, University of Melbourne, The Built Group, AECO, Damn Serious games, Capstone Education.
- Holmesglen staff: Adil Abbas, Harry Houhoulas and Josian Berard

Research into the development and trial of learning and assessment resources for VET level programmes in building construction. Provision of a resource to

students via the web utilising augmented reality and virtual reality packages to simulate a range of building construction scenarios.

Holmesglen Enterprise Solutions

VR Tunnelling training Project

- Funding: Workforce Innovation Training Fund (WTIF)

Cross Yarra Partnership (CYP) design and construction Joint venture. Holmesglen to upskill current workforce and build Victoria's tunnelling capability.

'Keeping our first responders on the job': Research and development partnership between Holmesglen, EastLink, and Monash University Accident Research Centre to improve safety for emergency service workers.

- Funding: Workforce Innovation Training Fund (WTIF)

EastLink, in collaboration with the Monash University accident Research Centre and Holmesglen are designing and evaluating a training programme designed to improve the safety of emergency workers and incident responders operating on high speed roads.

HOLMESGLEN APPLIED RESEARCH AND INNOVATION FUND PROJECTS

Health Science, Youth & Community Studies

An intraprofessional learning experience for nursing students to improve collaborative practice and intraprofessional communication

This research will examine the impact of an intraprofessional learning experience using simulation-based education methods on student learning.

Challenging conversations in healthcare: preventing and reducing patient complaints through targeted in-situ education on communication skills.

This study will investigate the nature of patient complaints within Holmesglen Private. This data will be used to inform the design of an education program, (potentially incorporating simulated patients) to deliver to hospital staff on ways to prevent and manage these challenging conversations. The education program will be evaluated longitudinally using quantitative and qualitative methods (pre and post the education and at 6 months post).

Business, Design and Information Technology (BDIT)

Researching the benefits gained from participation in a student placement programme

This research project examines the effectiveness of Holmesglen's student placement programme for business degree and business diploma courses.

Applied Research at Holmesglen 2018-2019

Holmesglen's Startup Hub: Successes and Challenges

The research project will cover a four-year period and aims to examine "...the outcomes and levels of satisfaction of 'clients' participating in Holmesglen's Startup Hub..." The research will inform decision making about improvements needed in the operation of the programme; enhance the experience and entrepreneurial attributes of participants; and help assess the programme's viability.

Building Construction and Engineering (BCE)

Research study into the integration of Building Information Modelling (BIM) technology into building construction courses at the vocational level.

This research project is being designed to examine the nature and applicability of BIM in vocational courses and then works with industry in the design and development of an approach to the teaching of BIM technology to vocational level students.

STAFF RESEARCH PROJECTS

Staff initiated applied research projects (including staff undertaking higher degrees by research).

The experience of adolescent SPs in health professional education

Andree Gamble, Associate Professor Margaret Bearman and Professor Debra Nestel. School of Nursing, PhD qualitative research focused on the experience of adolescent simulated patients in health professional education.

Collaborative community-based research

Karen King, Higher Education Support Unit, (HESU) was the recipient of the Bruce Mackenzie Fellowship for 2018. Ms King visited universities in the United Kingdom and studied models of collaborative community-based research.

Honours degree, nursing (UTAS)

Jasmin Rigby-Day, School of Nursing. Factors influencing acute care nurses provision of end of life care within acute care wards.

Students and Applied Research; the student as researcher

Dr. Henry Pook (CARI). This research examines the nature and diversity of student-based research in TAFE and its role in preparing people for a rapidly changing workforce: it includes the research activities of students working alongside staff researchers as well as students independently conducting their own research.

STUDENT RESEARCH

Projects that identify student involvement in applied research

Digital and interactive Games

Holmesglen Diploma of Digital and Interactive Games students worked with Liminal VR Pty Ltd to create a VR environment to support a research and development team of Liminal neuroscientists and psychologists in the

creation of a digital experience that would allow young people to experiment with short, fun experiences to help build emotional regulation and resilience.

Sports Marketing

Student teams are working alongside VAFA clubs researching marketing strategies for the clubs to consider. To achieve this, students submit a market research proposal which is followed by data collection (e.g. extended interview, survey, focus group, observation etc.) with club stakeholders.

Architectural design-project based applied research

Advanced Diploma of Building Design. Project based design showcase incorporates the fundamentals of applied research. Projects formulated during last semester of the course. Involves selection of a site (e.g. Fishermen's Bend), teams selected and, simulating a real life work situation, students undertake extensive research of the site (history, topography, socio-economic status etc.) and design plans for a residential project. Groups present to industry, staff at an industry-community showcase their research findings and designs for a medium and high density building development.

Hospitality Strategic Management Industry partnerships

Third Year Bachelor of Hospitality management students work directly with hospitality industry operators in the Murrindindi Shire Eildon. This applied research project explores potential opportunities and contingencies for possible external threats to operations.

DEVELOPING AN APPLIED RESEARCH CULTURE

A key function of The Centre is to support the development of an applied research culture at Holmesglen through a capability building training programme designed to assist applied researchers in their work with industry. Such capability building takes the form of conferences, workshops, presentations, mentoring, and individualised support in the preparation of grant applications and formulating proposals for research projects.

Workshops for researchers: Enhancing researcher capability

As part of its programme to enhance research capability the Centre designed and implemented a series of workshops throughout 2018-2019. These workshops explored ways in which researchers can design and undertake applied research, understand the importance of ethics and research integrity, and develop strategies to communicate their research findings at conferences, in journals, or through professional publications.

Establishing a research profile: Holmesglen participation in conferences, 2018-19

The Centre has worked closely with faculties and teaching departments to promote and co-ordinate the involvement of staff researchers in conferences showcasing applied research across the vocational and professional education and training sector.

Holmesglen researchers presented at a number of national and international conferences in 2018-2019. This included AVETRA (Australian Vocational Education and Training Research Association) conferences; NCVER (National Centre for Vocational Education Research) Conferences; the World Federation of Colleges and Polytechnics Conference (WFCP); and several other conferences, both interstate and overseas.

Cedomir Gladovic - 8th International Conference on Learning Analytics and Knowledge

- Sydney, Australia, March 5-9, 2018
- Poster: 'Video Exemplar: from Meaningless to Meaningful'.

Julie Wright - AVETRA Conference

- Melbourne, Australia, April 26-27, 2018
- Presentation: Learning practical skills within a digitally integrated classroom.

Ryan Euinton - AVETRA Conference, Melbourne

- Australia, April 26-27, 2018
- Presentation: Learning practical skills within a digitally integrated classroom.

Warren Guest - AVETRA Conference

- Melbourne, Australia, April 26-27, 2018
- Presentation: A roadmap to completion: designing curriculum for apprenticeship training.

Dr Henry Pook - AVETRA Conference

- Melbourne, Australia, April 26-27, 2018.
- Workshop: Developing collaborative proposals for applied research: the TAFE-industry nexus.

Penny Vervoost - AVETRA Conference

- Melbourne, Australia, April 26-27, 2018.
- Presentation: Keep calm and carry a Pentagon (literacy skills).

Professor Debra Kiegaldie - NETNEP International Nursing Conference

- Banff, Canada, May 6-9, 2018
- Presentation: "Empowerment of patients will achieve the best results".
An evaluative study of a simulation-based workshop for health professional students in falls prevention.

Professor Debra Kiegaldie - NETNEP International Nursing Conference

- Banff, Canada, May 6-9, 2018
- Presentation: Creation of a faculty wide simulation-based education strategy to increase engagement with simulation-based education.

Professor Debra Kiegaldie and Andree Gamble - NETNEP International Nursing Conference

- Banff, Canada, May 6-9, 2018
- Presentation: Student evaluations: A meaningless burden for students or an educator's field of gold?

Professor Debra Kiegaldie - Victorian Simulation Alliance SIMposium

- Melbourne, Australia, May 10, 2018
- Workshop: How to write simulation scenarios and scripts.

Frances Cieslak - Australian Primary Health Care Nurses Association Conference

- Brisbane, Australia, May 10-12, 2018
- Poster: Identifying and screening for mental health issues in primary health care
- Poster: Drinking can add up without people realising it.

Professor Debra Kiegaldie - 8th International Clinical Skills Conference

- Prato, Italy, May 19-29, 2019
- Member of Scientific Committee, Session chair
- Poster: Health Industries: An Applied Health Workforce and Education Partnership.

Kirsty Murtagh - VSA Inaugural Simulation Conference

- Melbourne, Australia, August 16-17, 2018
- Presentation: Using simulation in Sierra Leone post Ebola implementing the first Infection Prevention and Control Policy

Janine Arantes - NCVER Conference

- Sydney, Australian, August 17-18, 2018
- Workshop: Digital humanity: algorithmic identity and employment

Dr Henry Pook - NCVER Conference

- Sydney, Australia, August 17-18, 2018
- Workshop: The student as researcher: preparing people for a rapidly changing workforce

Kiralee Ciampa - RCH Nursing Research & Clinical Innovations Symposium

- Melbourne, Australia, September 11, 2018
- Presenter: Exploring nurses' perceptions of their role in nurse-led burns procedures

Robbie Coyle and Dr Sam Duncan - WFCP World Congress

- Melbourne, Australia, October 8-10, 2018
- Breakout Session: Bridging the Gap for Sports Degree Students

Jan Davis - WFCP World Congress

- Melbourne, Australia, October 8-10, 2018
- Breakout Session: Supporting Internships: a Program of Social Inclusion for Young People with Disability

Establishing a research profile: Holmesglen participation in conferences, 2018-19

Dr Adil Abbas and Ross Digby (with Exner and Univ of Melb) - WFCP World Congress

- Melbourne, Australia, October 8-10, 2018
- Breakout Session: Virtual Reality to Bridge the Gap

Warren Guest and Andrew Carruthers - WFCP World Congress

- Melbourne, Australia, October 8-10, 2018
- Breakout Session: Connecting with Industry to Develop the Job-ready Students of the Future

Sharyn Meade and Rebecca Zolotareva - WFCP World Congress

- Melbourne, Australia, October 8-10, 2018
- Breakout Session: A recipe for transition: Building graduate communications capabilities

Julie Wright - WFCP World Congress

- Melbourne, Australia, October 8-10, 2018
- Breakout Session: Digitising Practical Skills

Ryan Euinton - WFCP World Congress

- Melbourne, Australia, October 8-10, 2018
- Breakout Session: Digitising Practical Skills

Dr Henry Pook - WFCP World Congress

- Melbourne October 8-10, 2018
- Presentation: Applied Research Affinity Group: 'Partnering with industry: case studies of applied research projects'

Professor Debra Kiegaldie - WFCP World Congress

- Melbourne October 8-10, 2018
- Presentation: Applied Research Affinity Group: 'Health Industries and Applied Research Partnerships'

Professor Debra Kiegaldie - IHF 42nd World Health Congress

- Brisbane, October 10-12, 2018
- Presentation: Health industries: An applied health workforce, research and education partnership

Cedomir Gladovic - 'ASCILITE: Australasian Society for Computers and Learning in Tertiary Education 2018

- Geelong, Australia, November 25-28, 2018.
- Poster: 'Video feedback: start of a dialogue'

Mary Hughes - Australian Association for Research in Education National Conference

- Sydney, Australia, December 3-6, 2018
- Presentation: 'Knowledgeable outsider: shadowing as a research method in education'. (Adapted from doctoral thesis)

Dr Henry Pook - AVETRA 22nd Annual Conference

- Sydney, Australia, June 17-18, 2019
- Workshop: 'The student as researcher: preparing people for a rapidly changing workforce.'

Jan Davis and Stuart Hunter - AVETRA 22nd Annual Conference

- Sydney, Australian June 17-18, 2019
- Presentation: An Integrated Practical Placement Program: Transitioning students with disability into paid employment

Dr. Sam Duncan - Conference on Sport & Society

- Toronto, Canada, June 20-21, 2019
- Conference paper: 'How Australia's obsession with overseas sport is starting to hurt'

Dr Anjali Chhetri - 21st International Conference on Electronic Commerce (ICEC 2019)

- Busan, Republic of Korea, July 3-5, 2019.

Ross Digby - Victorian TAFE Association Annual State Conference

- Melbourne, Australia, August 16, 2019
- Conference Presentation: HVAC Centre of Excellence.

Professor Debra Kiegaldie - Victorian TAFE Association Annual State Conference

- Melbourne, Australia, August 16, 2019
- Plenary: Applied Research - Evolving roles in vocational and higher education.

Professor Debra Kiegaldie - Australasian Simulation Congress

- Gold Coast, Australia, September 2-5, 2019
- Presentation: JasperVR: Development of an innovative Virtual Reality program for nursing students.

Professor Debra Kiegaldie - Grassroots Falls Festival

- Perth, Australia, September 18-20, 2019
- Presentation: Educating hospital-based health professionals to optimise falls screening: a mixed methods study.

Robyn Neeson, Leo Billington - Tertiary Education Quality and Standards Agency (TEQSA) Conference,

- Melbourne, 27-28th November 2019
- 'A Novel Collaborative Student Placement Program Benefits its Stakeholders'

Cedomir Gladovic-TEQSA Conference

- Melbourne, 27-28th November 2019
- 'Evaluative Judgement as a New Graduate's Attribute Developed by the Quality Partnership.'

Karen King - TEQSA Conference

- Melbourne, 27-28th November 2019
- 'Ethical Issues in Collaborative Research'

Professor Debra Kiegaldie (joint paper with Susan Webb, Elizabeth Knight, Shaun Rawolle, Steven Hodge) - Australian Association for Research in Education Conference

- Brisbane, 1-5 December, 2019
- 'Assessment strategy underpinned by curriculum practice'

Applied Research Workshops: Wednesday 11 and Thursday 12 December 2019

Dr Estelle Irving and Ms Karen King

Developing a Research Question and understanding the Literature Review; Ethics and ethical approval for research; Presenting at a conference; Action research and teaching practice; Requirements of the Code for Responsible Conduct of Research; Writing for Publication; and Funding for Research.

Publications

Holmesglen researchers seek to report their work through a range of publications to inform discussion, contribute to the improvement of teaching and learning and provide the groundwork for further research and innovation.

Dr Louise Shaw (HSYCS)	2018	Cranney, L., Shaw, L., Phongsavan, P. (2018) Are outdoor gyms located in areas of greatest need and impact? An audit in Sydney, Australia. <i>Annals of Leisure Research</i> 22 (3), pp 395-403.
Dr Samuel Duncan (ESSE)	2018	Duncan, S. The Business of Sport, Sledging and the Corruption of Play – an Interpretation through a Huizingian-Bourdieu Lens. <i>Journal of Physical Culture and Sport: Studies and Research</i> , 2018. Vol LXXXDOI: doi 10.2478/pcssr-2018-0027
Dr Estelle Irving (HESU)	2018	Irving, E and Carter, C (eds) The Child in Focus: Learning and Teaching in Early Childhood Education (Melbourne: Oxford University Press, 2018). Shortlisted for an award for the 2019 Educational Publishing Awards in the 'Tertiary Teaching and Learning (print)' category.
Professor Debra Kiegaldie (HSYCS)	2019	Kiegaldie, D., Nestel, D., Pryor, E., Williams, C., Bowles, KA., Maloney, S. & Haines, T. "Design, delivery and evaluation of a simulation-based workshop for health professional students on falls prevention in acute care settings. <i>Nursing Open</i> 2019;6: 1150-1162. doi 10.1002/nop2.318
Professor Debra Kiegaldie (HSYCS)	2019	Marshall, S. & Kiegaldie, D. (2018). Opening Editorial: Conversations in health care education, <i>MedEdPublish</i> , 8(2), page 1. 10.15694/mep.2019.000071.1
Professor Debra Kiegaldie (HSYCS)	2019	Marshall, S. & Kiegaldie, D. (2019). Closing Editorial: Conversations in health care education, <i>MedEdPublish</i> , 8(2), page 1. doi 10.15694/mep.2019.000149.1
Professor Debra Kiegaldie (HSYCS)	2019	Kiegaldie, D. & Farlie, M. (2019). Using education interventions in falls research: a framework for evidence-based education design (2nd ed.). Holmesglen Institute, Melbourne, Australia.
Dr Louise Shaw & Professor Debra Kiegaldie (HSYCS)	2019	Heng, H, Jazayeri, D, Shaw, L, Kiegaldie, D, Hill, AM, & Morris, M. Educating hospital patients to prevent falls: protocol for a scoping review. <i>BMJ Open</i> 2019;9: e030952. doi:10.1136/bmjopen-2019-030952
Dr Louise Shaw (HSYCS)	2019	*Finch, C.F., Goode, N., Shaw, L., Salmon, P., (2019) An ecological comparison of end user experiences with two incident and injury reporting systems designed for led outdoor activities -challenges for implementation of future data systems. Accepted by <i>Injury Epidemiology</i> .
Dr Louise Shaw (HSYCS)	2019	*Goode, N., Shaw, L., Finch, C.F. Salmon, P., (2019) Challenges of translating Rasmussen's Accimap into a usable, sustainable and useful incident reporting system: end user attitudes following 12 months' implementation. Accepted by <i>Cognition, Technology and Work</i> .
Dr Louise Shaw (HSYCS)	2019	McKenzie, L., Shaw, L., Jordan, J.E., Alexander, M., O'Brien, M., Singer, S.J., Manias, E. (2019) 'Factors influencing the implementation of a hospital-wide intervention to promote professionalism and build a safety culture: A qualitative study.' Accepted by The Joint Commission Journal on Quality and Patient Safety.



